



Eletta-C

Display, Data Concentrator, Gateway to Industry 4.0



One Device for Multiple Functions

Eletta-C is the ideal supplement for all Eletta Flow products that feature a 4-20mA or a Modbus output or even Switching Outputs.

Apart from its function as a local display, Eletta-C can optionally transfer the flow data via WLAN onto portable devices like mobile phones or tablets, or per SMS. So, the user has the flow data or alarms always on hand! And this even without installing an app.

Mount the Eletta-C directly in your machine or read the flow values in the control room. Eletta-C always offers you the right option to read your data on a large clear display.

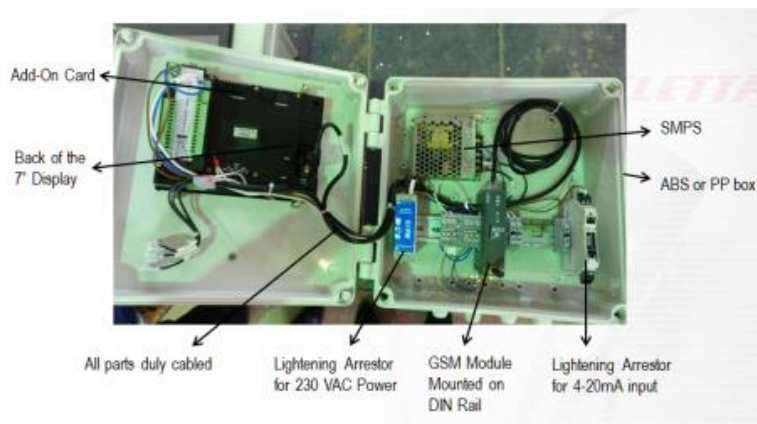
Technical Data

- Display Standard 7" WVGA colour TFT
Special 4.3" Sized and 10" versions also available
- Brightness 300 cd/m²
- Resolution 400 x 800 Pixel
- Backlight LED
- CPU 32-bit RISC
- Memory up to 128MB
- Data logger up to 20MB
- Power Input 24VDC (+/-15%)
- Power Consumption 9W
- Working Temperature 0 - 60°C
- Storage Temperature -20 - +85°C
- Rel. Humidity 10 – 95%, non-condensing
- Weight ca. 200g, without add-on card, modem or housing
- Size 186 x 138 x 31 mm (W x H x D)
- Panel Cut Out 175 x 127mm (W x H)
- Protection Class IP66 when panel mounted
- Certificates CE, UL Class I Div. 2



Options

- Housing available in different materials, like ABS, Polycarbonate, PP types of Plastic and Stainless Steel body, for installations in industrial environments, supplied pre-mounted and pre-wired with Eletta-C.
- Modem for connection with WLAN: remote monitoring of flow data or switch status via any wireless device that is connected with the same WLAN.
- Add-On Card (up to 3/5 per Eletta-C) with:
 - a. 2 analog Input
 - b. 1 analog Outputs
(AI, AO for 0-20mA, 4-20mA, 0-5,0-10V)
 - c. 12 DI, Digital Inputs
 - d. 10 DO, Digital Outputs



Communication

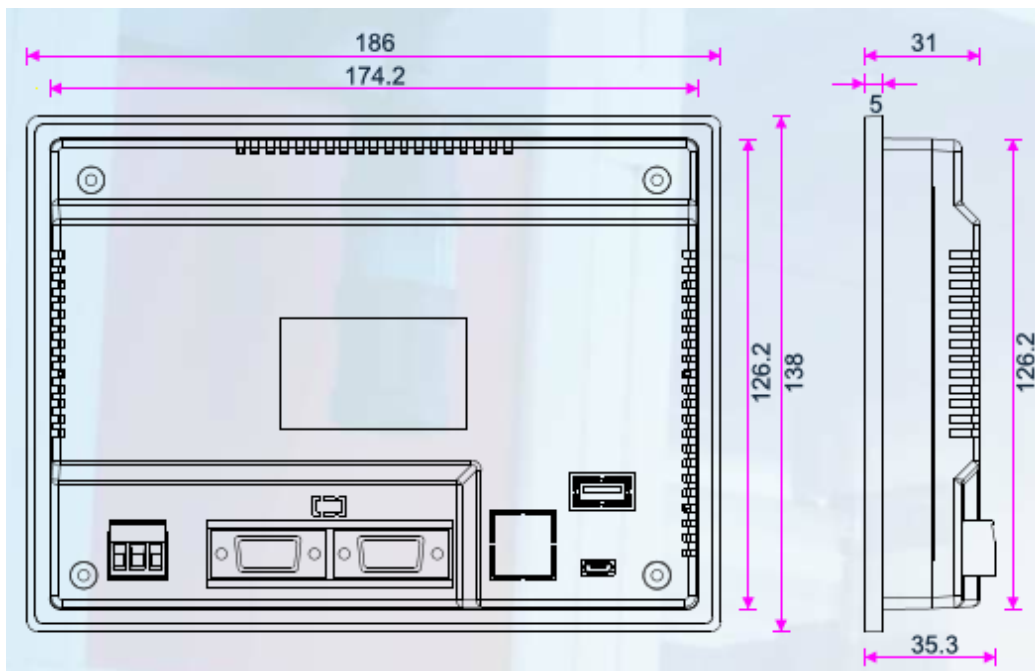
- COM1 & COM2 RS 232/RS485
- USB B 1 for programming
- USB Host
- Micro-SD-Card Slot 4-32GB
- Ethernet 10/100MB/s

Data Logging

- Data are collected in the integrated 20MB memory.
- Option: memory extension via SD card.
- Log file can be sent in CSV format:
 - (1) onto USB stick
 - (2) Via USB-B cable or LAN cable directly onto a PC.

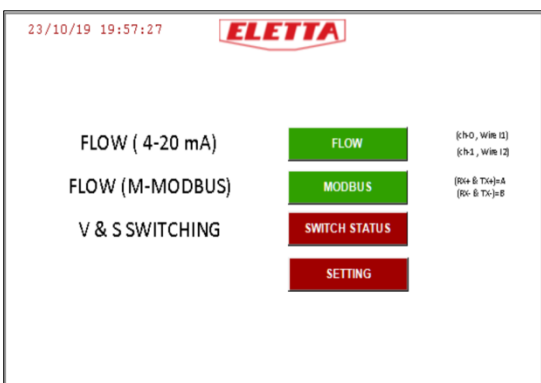
Dimensions

Eletta-C

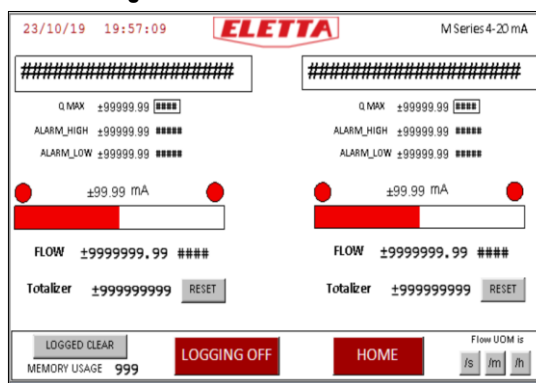


Software

Start screen: selection of functions



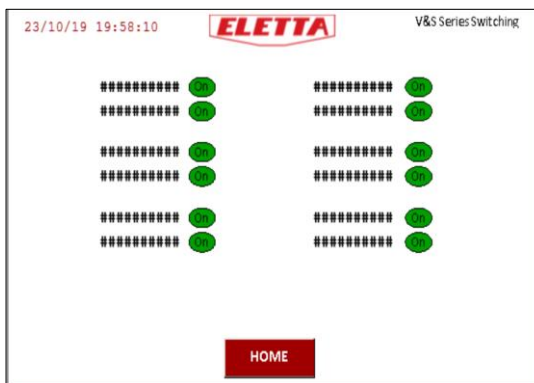
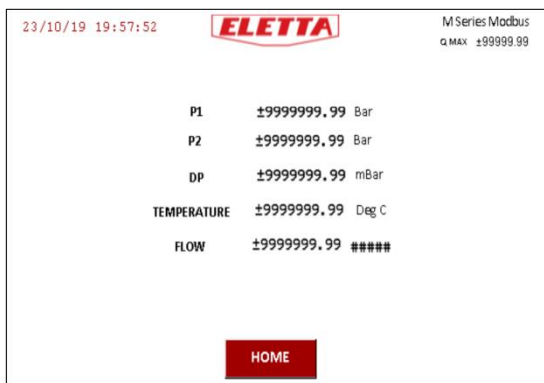
Flow reading and totalizer



- The fields marked with hash tags can be edited and you can enter your own designations of flow meters or switches.
- Function as a data concentrator: Eletta-C can show the flow data of up to 4 flow meters.
- Display of numeric values and bar graphs.

Pressure, Differential Pressure, Temperature and Flow via Modbus (M-Series)

Switch status for V or S Series



- Up to 32 Eletta M-Series flow meters can be connected with one Eletta-C.
- With the log function, the viscosity compensation algorithm for oils can be integrated.
- The fields marked with hast tags can be edited and you can enter your own designations of flow meters or switches.
- Display of 2 switch status per connected flow meter: upper and lower limit.
- If the flow reaches the limit, the display changes from green to red – optical alarm function.

Eletta-C NE as Webserver

- Via the Ethernet port, data of the connected flow meters can be transferred:
- Hard-wired integration of the Elettta-C in existing WLAN with fixed IP-address for the internet connection
- Alternatively per optional wireless connection integration into existing WLAN, also with fixed IP address.
- Display of alphanumeric data with any internet browser.
- Remote access from mobile devices outside the WLAN via VPN.
- Advantage: system monitoring independent of the location of the maintenance person in charge!

